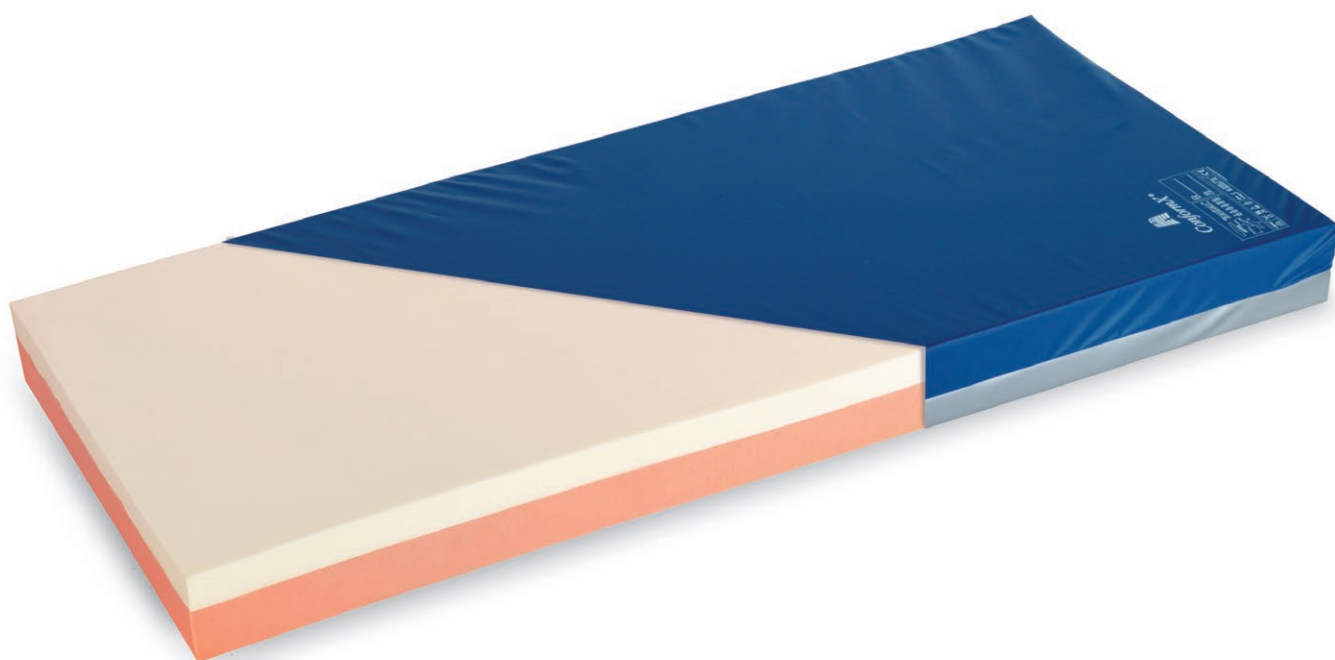


# ConformX®

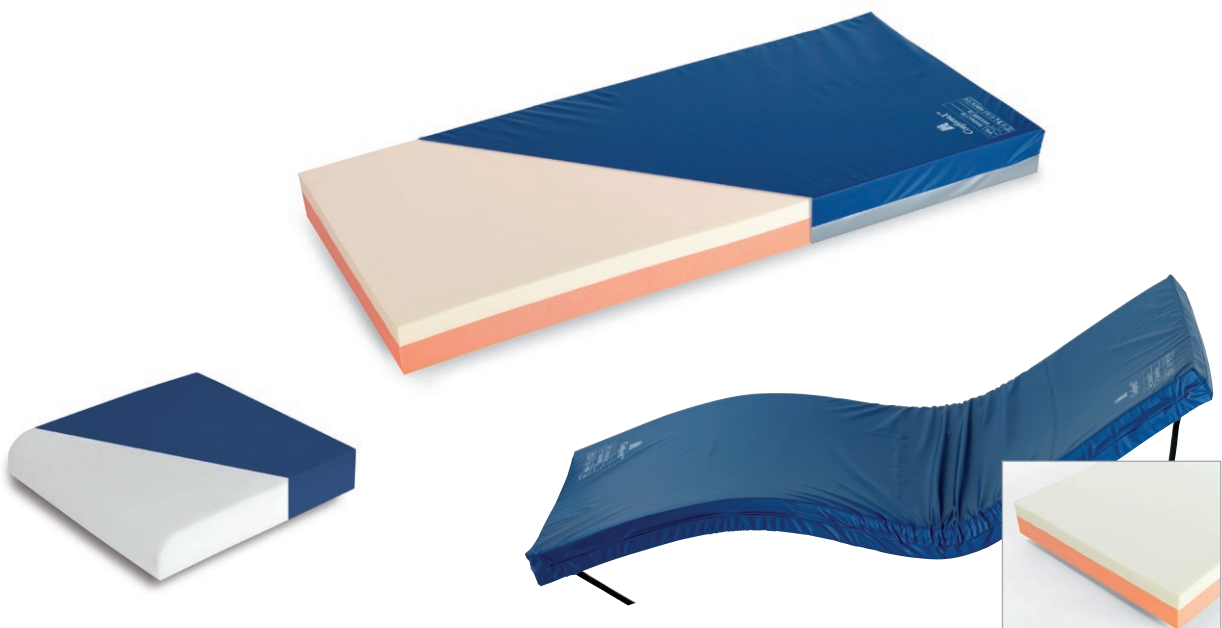
Visco-elastic foam mattress range



The ConformX range uses a layer of visco-elastic (memory) foam which provides maximum support with low interface pressures. By gently moulding to the patients body shape it offers superior performance due to the unique contoured construction. The ConformX range was specifically developed with patient comfort and pressure injury management in mind, and provides a 24 hour solution.

# ConformX Range

The range includes a pressure redistributing viscoelastic foam mattress replacement, overlay and seating system. It offers excellent clinical benefits for a wide range of environments. The ConformX range is durable and is a long lasting solution, available in various sizes and is easy to maintain due to the durability of the cover and foam.



24 Hour Care Package - Optional seat cushion

Overlay System - A mattress overlay is also available and is easy to install

## Safe and convenient for patients and carers

The ConformX mattress has been designed and tested by Arjo research and development facility, to ensure optimum and reliable performance. Manufactured using premium materials, designed to meet equipment decontamination guidelines.

The ConformX mattress replacement is available in multiple sizes and has been tested for X-Ray translucency and is suitable for CPR. In addition, the overlay includes corner securing straps for extra security.

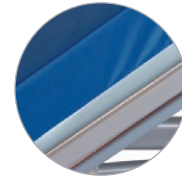
## Cover features

- Ultra two way stretch
- Vapour permeable
- Water resistant
- Antimicrobial, bacteriostatic and fungistatic
- Non slip silver base
- Easy to clean and maintain
- Concealed zip
- Clearly marked covers with TurnTable® guide and washing instructions



#### MEMORY FOAM

Gently moulds to patient's body



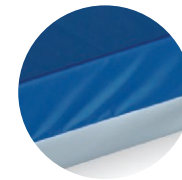
#### CONCEALED ZIP

Increased infection control.



#### SUPERB PROFILING

Superb profiling in the gatched or supine position.

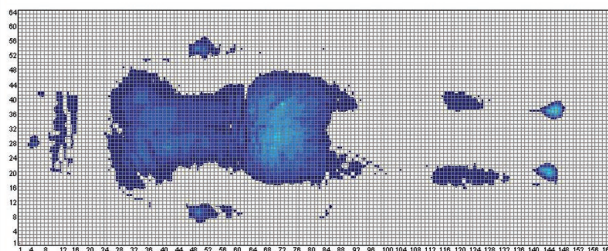


#### SILVER BASE MATERIAL

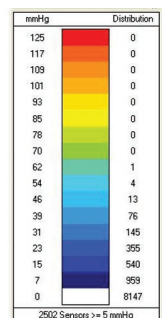
Offering long term performance



TurnTable Guide - All ConformX mattress replacement systems carry the TurnTable Guide



ConformX mattress tested with an 86 kg (189 lbs) subject:  
90% of surface area <30mmHg



#### PRESSURE AREA INDEX

Pressure Area Index (PAI) indicates the ability of a surface to spread pressure across available contact area. The higher the PAI, the better the performance.

# Specifications\*

2-WAY TURN MATTRESS REPLACEMENT	DIMENSIONS H X W X D	ORDER CODE
MR Acute	1980 x 860 x 150 mm (78"x 33¾"x 6")	150CX198/086
MR Standard	1900 x 920 x 150 mm (74¾"x 36¼"x 6")	150CX190/092
MR Double	1900 x 1380 x 150 mm (74¾"x 54¼"x 6")	150CX190/138
MR Euro Wide	2040 x 920 x 150 mm (80¾"x 36¼"x 6")	150CX204/092
MR Euro Narrow	2000 x 800 x 150 mm (78¾"x 31½"x 6")	150CX200/080
Max. patient weight:		
Warranty: 6 years for foam core and 2 years for cover		
<b>Overlay systems</b>		
OL Standard	1980 x 860 x 95 mm (78"x 33¾"x 3¾")	CO198/086
OL Community	1900 x 920 x 95 mm (78"x 33¾"x 3¾")	CO190/092
Warranty: 1 year for foam and cover		
<b>Seat cushions</b>		
Seat	430 x 430 mm (17" x 17")	CS043/043
Max patient weight:		
90 kg (198 lbs)		
Warranty: 6 months		
<b>Fire retardancy</b>		
MR System meets BS EN 597 -1: 1995 BS EN 597 -2: 1995 and BS 6807: 1996, Section 2, Ignition Sources 0,1 and 5. Overlay System meets BS EN 597-1: 1995, BS EN 597 -2: 1995 and BS 6807: 1996, Section 2, Ignition Sources 0,1 and 5 in the top position		
<b>Cover fire retardancy</b>		
Fully enclosing covers fire retardant to BS 7175, Ignition Sources 0, 1 and 5		
<b>Mattress</b>		
X-ray: Tested to FDA 21 CFR Ch. 1 (4-1-95 Edition) HHS & CEI/IEC 601-1-3: 1994-07 (X-ray attenuation).		
CPR: Chest Compression for CPR purposes is not impeded		

\*Specifications are subject to change without notice.

February 2018 Only Arjo designed parts, which are designed specifically for the purpose, should be used on the equipment and products supplied by Arjo. As our policy is one of continuous development we reserve the right to modify designs and specifications without prior notice. ® and ™ are trademarks belonging to the Arjo group of companies.  
© Arjo, 2018

At Arjo, we are committed to improving the everyday lives of people affected by reduced mobility and age-related health challenges. With products and solutions that ensure ergonomic patient handling, personal hygiene, disinfection, diagnostics, and the effective prevention of pressure injury and venous thromboembolism, we help professionals across care environments to continually raise the standard of safe and dignified care. Everything we do, we do with people in mind.

Arjo AB · Hans Michelsengatan 10 · 211 20 Malmö · Sweden · +46 10 335 4500

www.arjo.com